


H HARRINGTON



PP

CARPET TILES

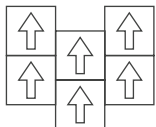
PULSE

 50X50 cm

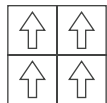
SPECIFICATION

Construction	-	Level Loop
Face yarn	-	100% Solution Dyed PP
Gauge	-	1/10 inch
Stitches per inch	-	12
Pile height	-	3.5 mm (± 0.5 mm)
Pile weight	-	610 g/m ²
Backing	-	E-Bac
Size	-	50cm x 50cm
Packing	-	20 Pcs/Carton(53.8 sqft)
Flammability	-	Passes (ASTM E648)
Smoke Density	-	Passes (ASTM E662)

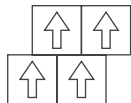
INSTALLATION METHOD



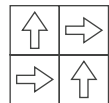
Ashlar



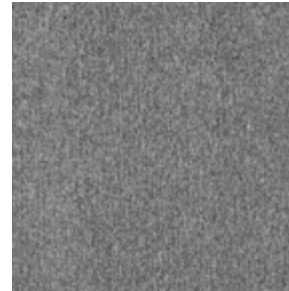
Directional



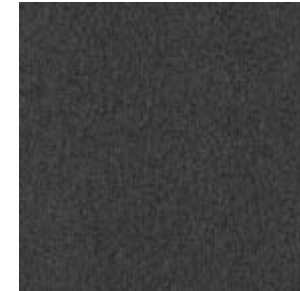
Brick



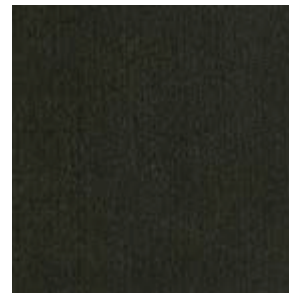
Quarter Turn



P601LG - LIGHT GREY



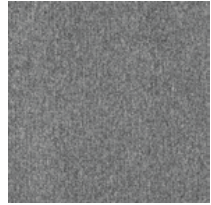
P602G - GREY



P604K - DARK GREY



PULSE



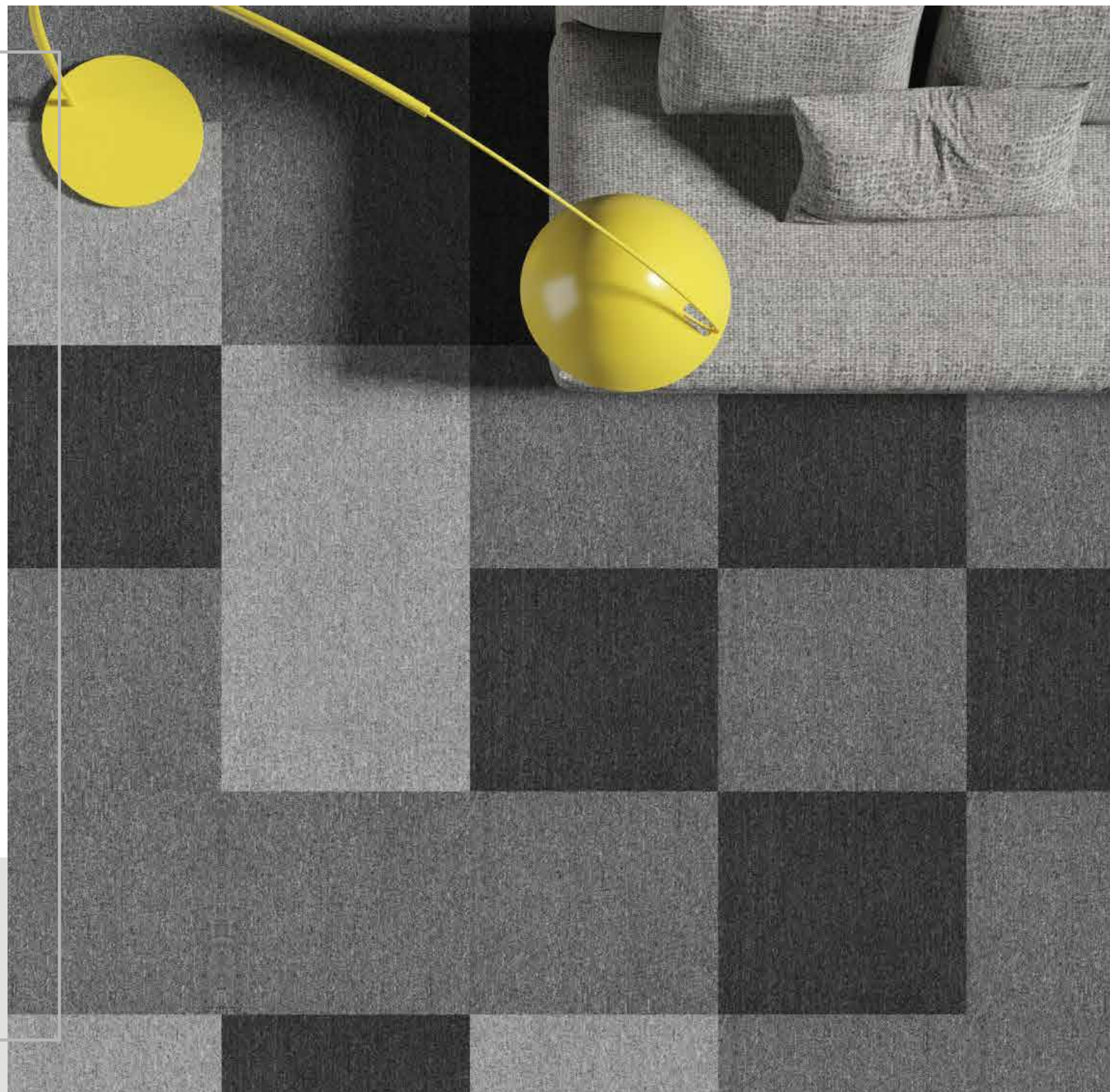
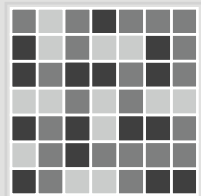
P601LG - LIGHT GREY



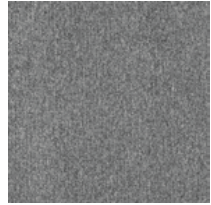
P602G - GREY



P604K - DARK GREY



PULSE



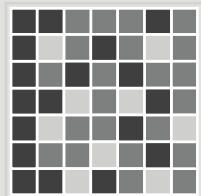
P601LG - LIGHT GREY




P602G - GREY



P604K - DARK GREY



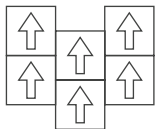
PRIME

 50X50 cm

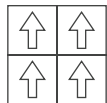
SPECIFICATION

Construction	-	Multi-Level Loop
Face yarn	-	100% Solution Dyed PP
Gauge	-	5/64 inch
Stitches per inch	-	9.5
Pile height	-	4.5-2.5 mm (± 0.5 mm)
Pile weight	-	610 g/m ²
Backing	-	E-Bac
Size	-	50cm x 50cm
Packing	-	20 Pcs/Carton(53.8 sqft)
Flammability	-	Passes (ASTM E648)
Smoke Density	-	Passes (ASTM E662)

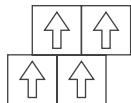
INSTALLATION METHOD



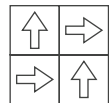
Ashlar



Directional



Brick



Quarter Turn



P603B - BLUE



P605Y - YELLOW



P606H - GREEN



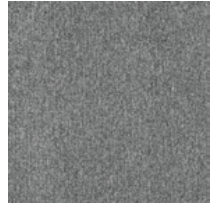
P6070 - ORANGE



P6208R - RED



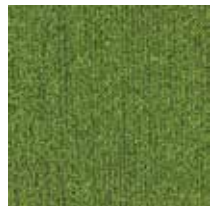
PRIME



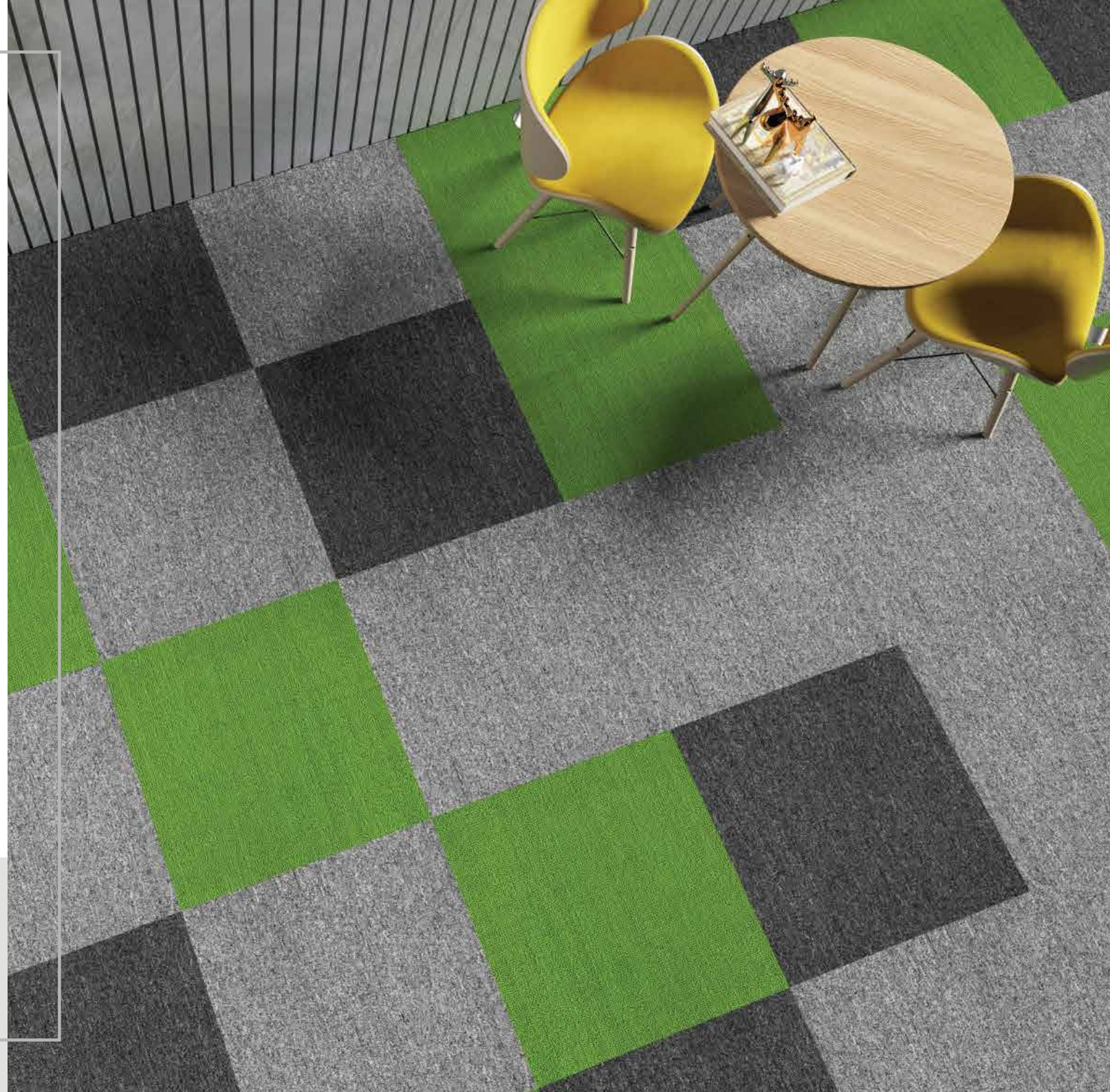
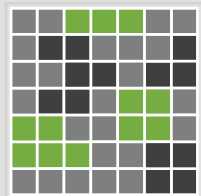
P601LG - LIGHT GREY



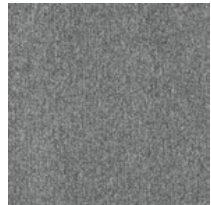
P604K - DARK GREY



P606H - GREEN



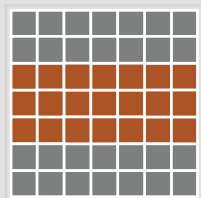
PRIME



P601LG - LIGHT GREY



P6070 - ORANGE



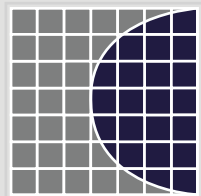
PRIME



G302G - GREY



P603B - BLUE



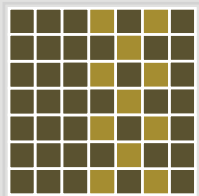
PRIME



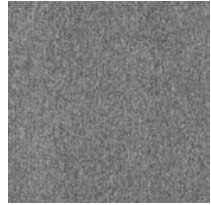
G301C - BROWN



P605Y - YELLOW



PRIME



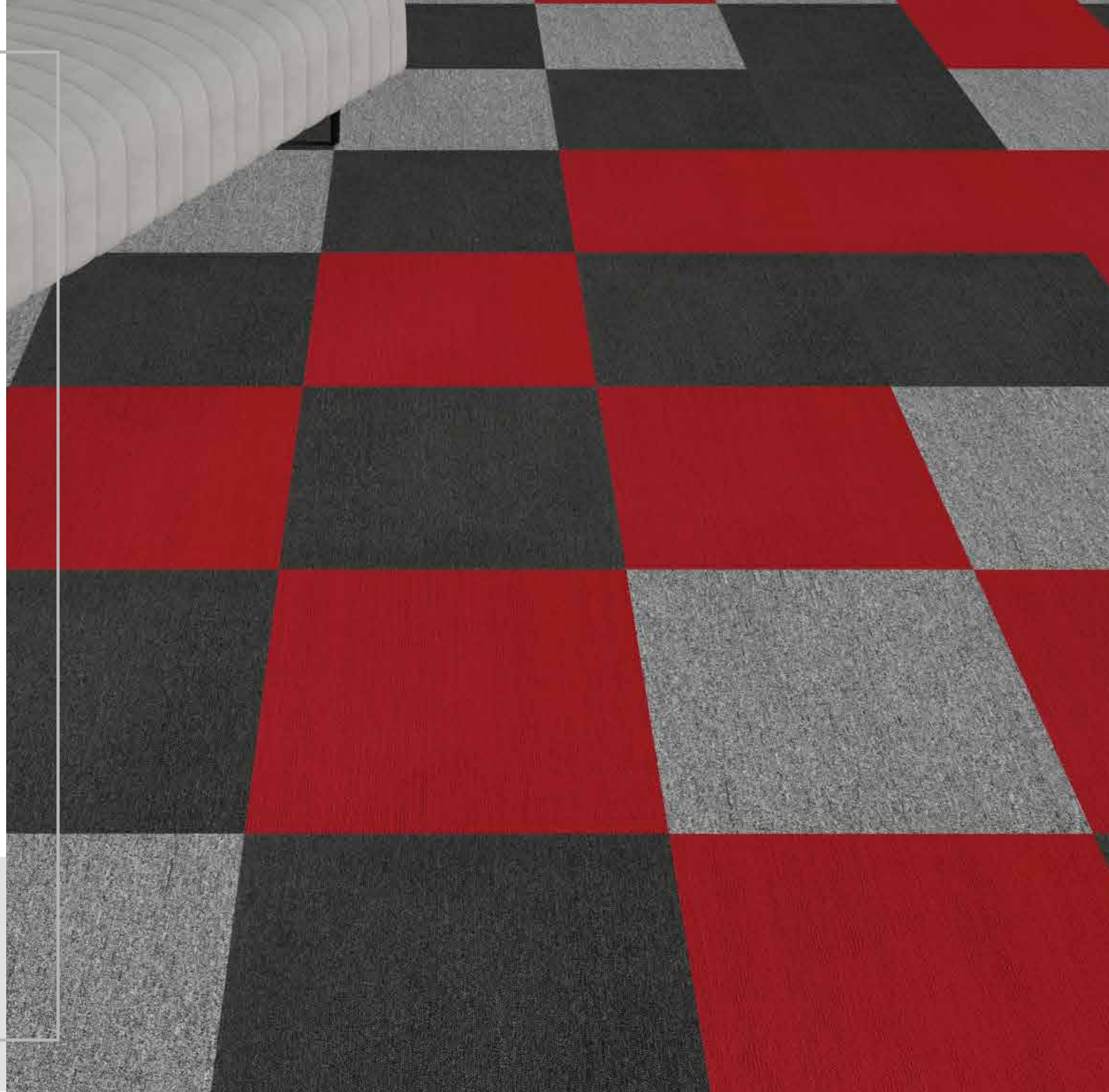
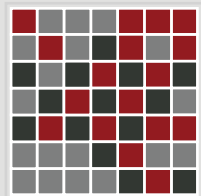
P601LG - LIGHT GREY



P602G - GREY



P6208R - RED



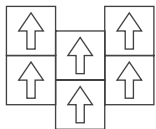
TWISTER

50X50 cm

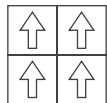
SPECIFICATION

Construction	-	Multi-Level Loop
Face yarn	-	100% Solution Dyed PP
Gauge	-	1/12 inch
Stitches per inch	-	10
Pile height	-	5.5-2.5 mm (± 0.5 mm)
Pile weight	-	610 g/m ²
Backing	-	E-Bac
Size	-	50cm x 50cm
Packing	-	20 Pcs/Carton(53.8 sqft)
Flammability	-	Passes (ASTM E648)
Smoke Density	-	Passes (ASTM E662)

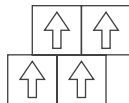
INSTALLATION METHOD



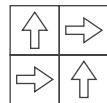
Ashlar



Directional



Brick



Quarter Turn



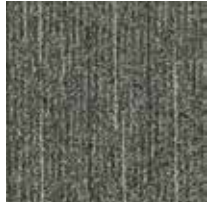
T204K - GREY



P604K - DARK GREY



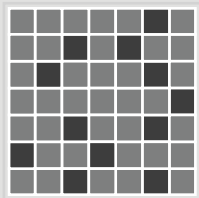
TWISTER



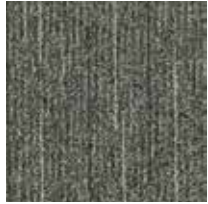
T204K - GREY



P604K - DARK GREY



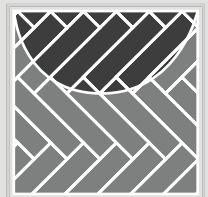
TWISTER




T204K - GREY



P604K - DARK GREY



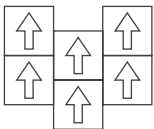
GRAPHIA

 50X50 cm

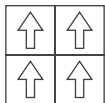
SPECIFICATION

Construction	-	Multi-Level Loop
Face yarn	-	100% Solution Dyed PP
Gauge	-	1/12 inch
Stitches per inch	-	10
Pile height	-	4.0-2.5 mm (± 0.5 mm)
Pile weight	-	680 g/m ²
Backing	-	E-Bac
Size	-	50cm x 50cm
Packing	-	20 Pcs/Carton(53.8 sqft)
Flammability	-	Passes (ASTM E648)
Smoke Density	-	Passes (ASTM E662)

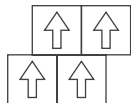
INSTALLATION METHOD



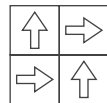
Ashlar



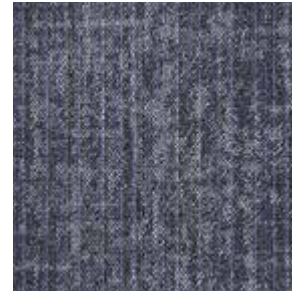
Directional



Brick



Quarter Turn



G302G - GREY



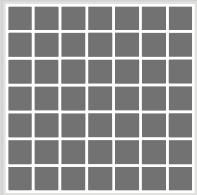
G301C - BROWN



GRAPHIA



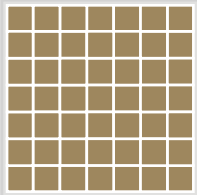
G302G - GREY



GRAPHIA



G301C - BROWN



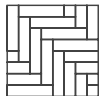
SYNERGY

50X50 cm

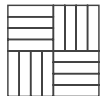
SPECIFICATION

Construction	-	Multi-Level Loop
Face yarn	-	100% Solution Dyed PP
Gauge	-	1/12 inch
Stitches per inch	-	10
Pile height	-	3.0-5.0 mm (± 0.5 mm)
Pile weight	-	600 g/m ²
Backing	-	E-Bac
Size	-	25cm x 100cm
Packing	-	20 Pcs/Carton(53.8 sqft)
Flammability	-	Passes (ASTM E648)
Smoke Density	-	Passes (ASTM E662)

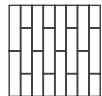
INSTALLATION METHOD



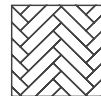
Herringbon



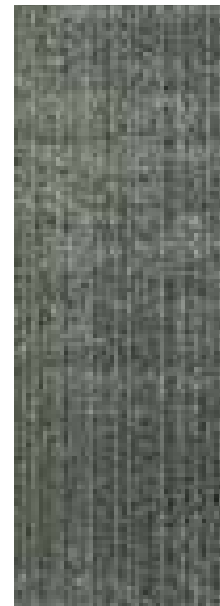
Basket weave



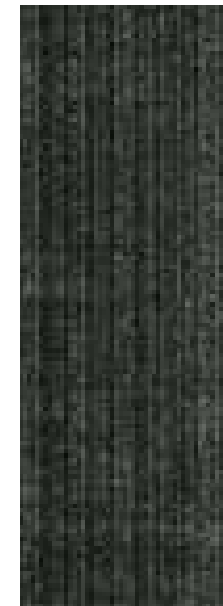
Vertical Ashlar



Herringbone 45°



S802G - LIGHT GREY



S804K - DARK GREY



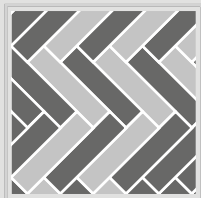
SYNERGY



S802G - LIGHT GREY



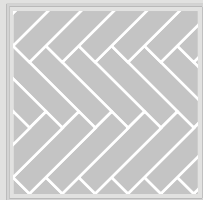
S804K - DARK GREY



SYNERGY



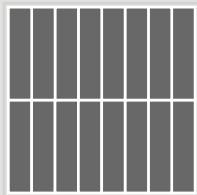
S802G - LIGHT GREY



SYNERGY



S804K - DARK GREY



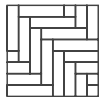
HORIZON

50X50 cm

SPECIFICATION

Construction	-	Multi-Level Loop
Face yarn	-	100% Solution Dyed PP
Gauge	-	1/12 inch
Stitches per inch	-	9.5
Pile height	-	5.5-4.0 mm (± 0.5 mm)
Pile weight	-	710 g/m ²
Backing	-	E-Bac
Size	-	25cm x 100cm
Packing	-	20 Pcs/Carton(53.8 sqft)
Flammability	-	Passes (ASTM E648)
Smoke Density	-	Passes (ASTM E662)

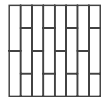
INSTALLATION METHOD



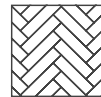
Herringbon



Basket weave

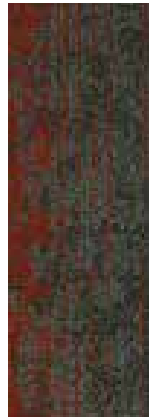


Vertical Ashlar

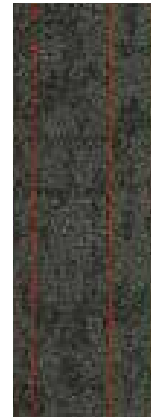


Herringbone 45°

H708R - RED



A



B



C

H706H - GREEN



A

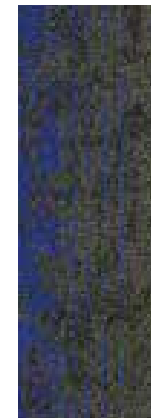


B

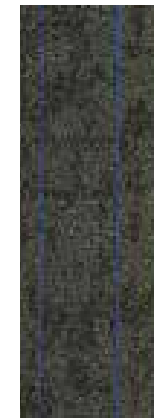


C

H703B - BLUE



A



B

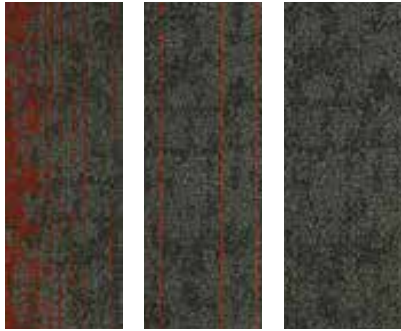


C



HORIZON

H708R - RED



A

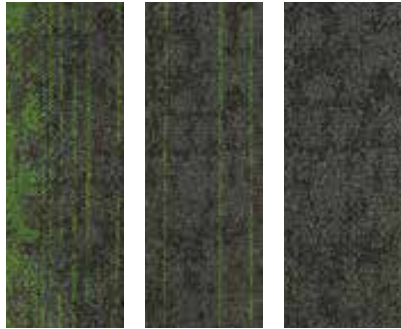
B

C



HORIZON

H706H - GREEN



A

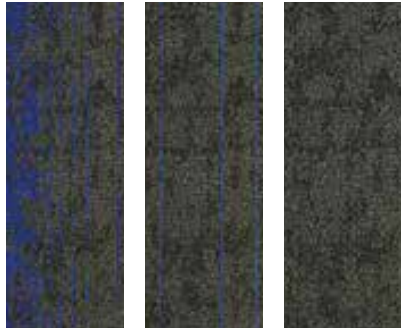
B

C



HORIZON

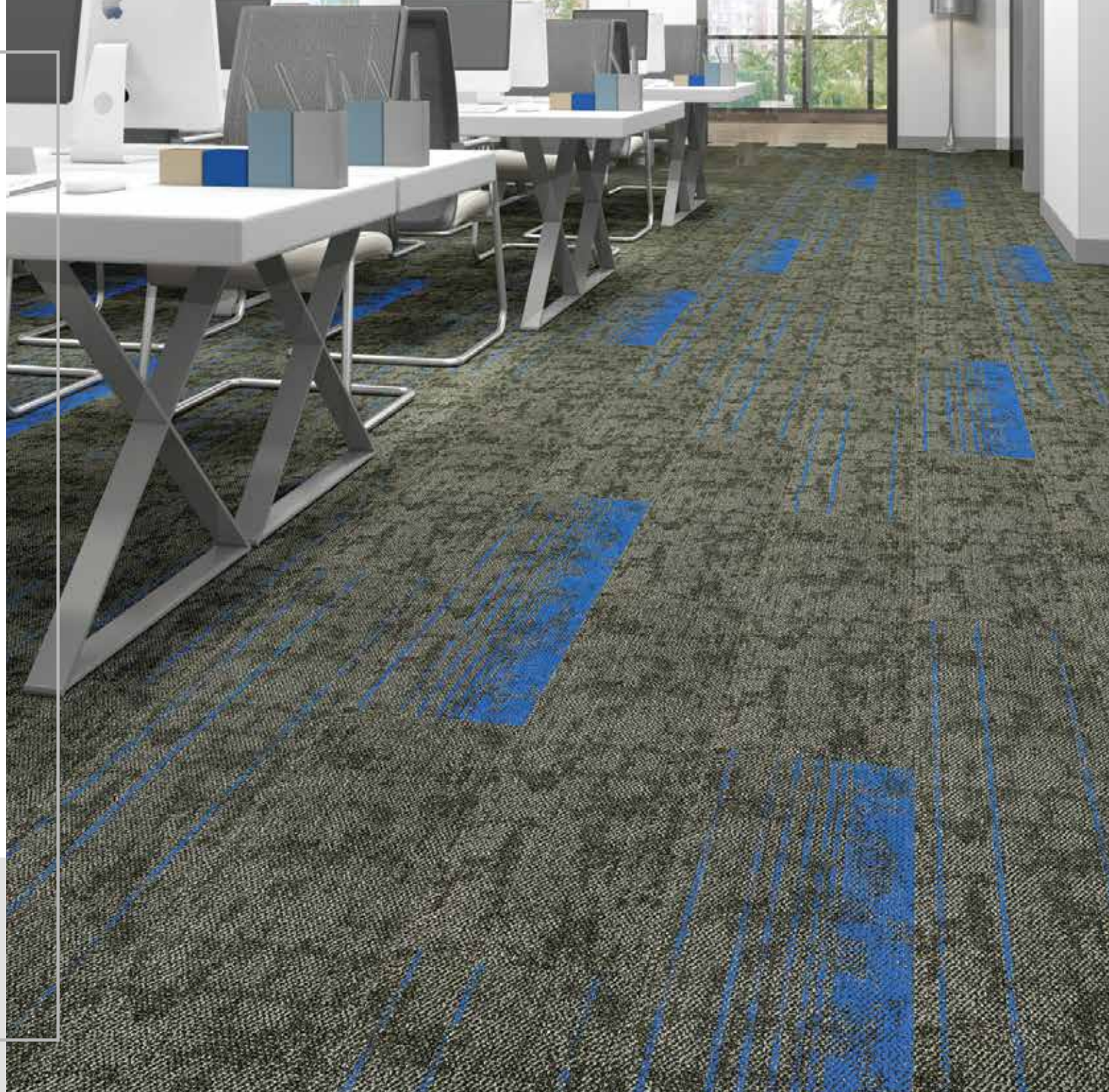
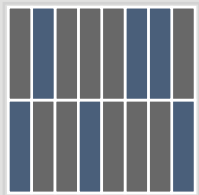
H703B - BLUE



A

B

C





EURONICS INDUSTRIES PVT. LTD.

8010 930 930 | info@harrington.co.in | www.harrington.co.in

Offices : Gurugram | Bangalore | Mumbai | Pune | Hyderabad | Ahmedabad | Surat | Chennai | Kolkata | Kerala | Indore | Chandigarh |
Visakhapatnam | Lucknow | Nagpur | Goa | Hubli | Coimbatore | Trivandrum | Guwahati | Jaipur | Kochi | Rajkot | Bhopal | Patna | Kanpur |
Vadodara | Bhubaneswar | Noida | Jammu | Dehradun